

featuring LAKE LIFE BY JESSICA SWIFT

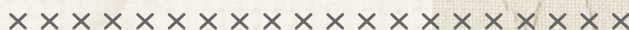
Unwind



ANGLES

A DIVISION OF AGF

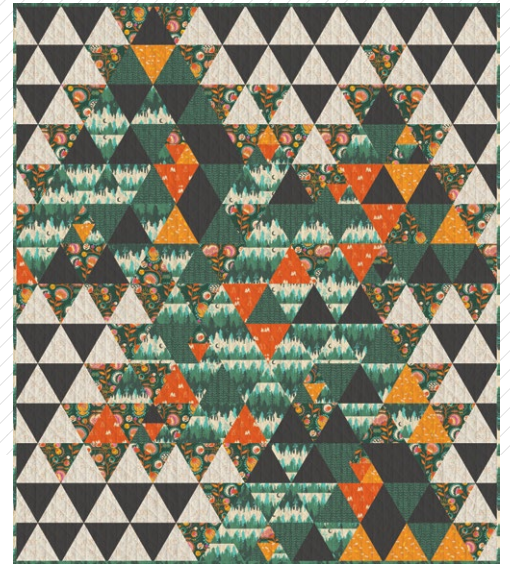
FREE PATTERN



Unwind



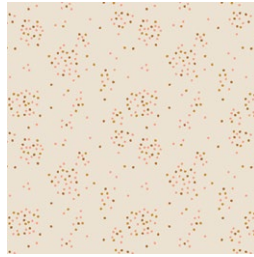
QUILT DESIGNED BY *AGFstudio*



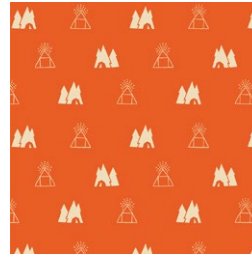
FABRICS DESIGNED BY JESSICA SWIFT



Fabric A
LKL51311
MISTY MORNING



Fabric B
LKL51303
SKIPPING STONES



Fabric C
LKL51307
SUMMER CAMP



Fabric D
PE550
LAVA ROCK



Fabric E
LKL51301
PETALBREEZE



Fabric F
LKL51310
KELP POND



Fabric G
LKL51309
KATTALAND FLORA DEEP



Fabric H
LKL51304
CLEAR PATH



Unwind

FINISHED SIZE | 73" x 84"

FABRIC REQUIREMENTS

Fabric A	LKL51311	1¾ yd.
Fabric B	LKL51303	1¾ yd.
Fabric C	LKL51307	7/8 yd.
Fabric D	PE550	1¾ yd.
Fabric E	LKL51301	½ yd.
Fabric F	LKL51310	¾ yd.
Fabric G	LKL51309	1½ yd.

BACKING FABRIC
LKL51304 5 ½ yds (Suggested)

BINDING FABRIC
Fabric **A** LKL51311 (Included)

CUTTING DIRECTIONS

¼" seam allowances are included.
WOF means width of fabric.

Fabric A

- Fifty two (52) triangles from fabric **A**.
- Ten (10) mini triangles from fabric **A**.

Fabric B

- Sixty nine (69) triangles from fabric **B**.

Fabric C

- Twelve (12) triangles from fabric **C**.
- Seven (7) mini triangles from fabric **C**.

Fabric D

- Seventy four (74) triangles from fabric **D**.
- Three (3) mini triangles from fabric **D**.

Fabric E

- Nine (9) triangles from fabric **E**.
- Seven (7) mini triangles from fabric **E**.

Fabric F

- Twenty five (25) triangles from fabric **F**.
- Nine (9) mini triangles from fabric **F**.

Fabric G

- Fifty six (56) triangles from fabric **G**.
- Nine (9) mini triangles from fabric **G**.

CONSTRUCTION

Sew all rights sides together with ¼" seam allowance.

- First sew the bottom three triangles into a row and then sew the top triangle onto the top.

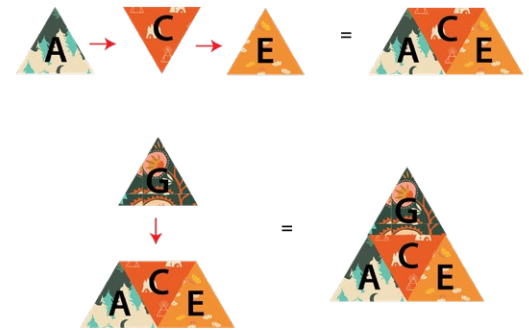


DIAGRAM 1

- Gather your Mini-Triangles and assemble into the blocks according to diagram 2.
- When finished your block should be the same size as the full-size triangle piece

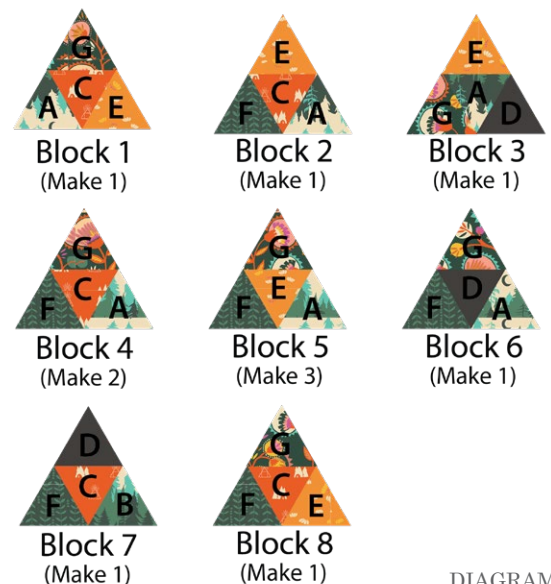


DIAGRAM 2

- Sew triangles and mini-Triangle Blocks together into rows. Refer to Diagram 3.
- Next, sew your rows together alternating your sewing start point from row to row to prevent sewing of the quilt top.

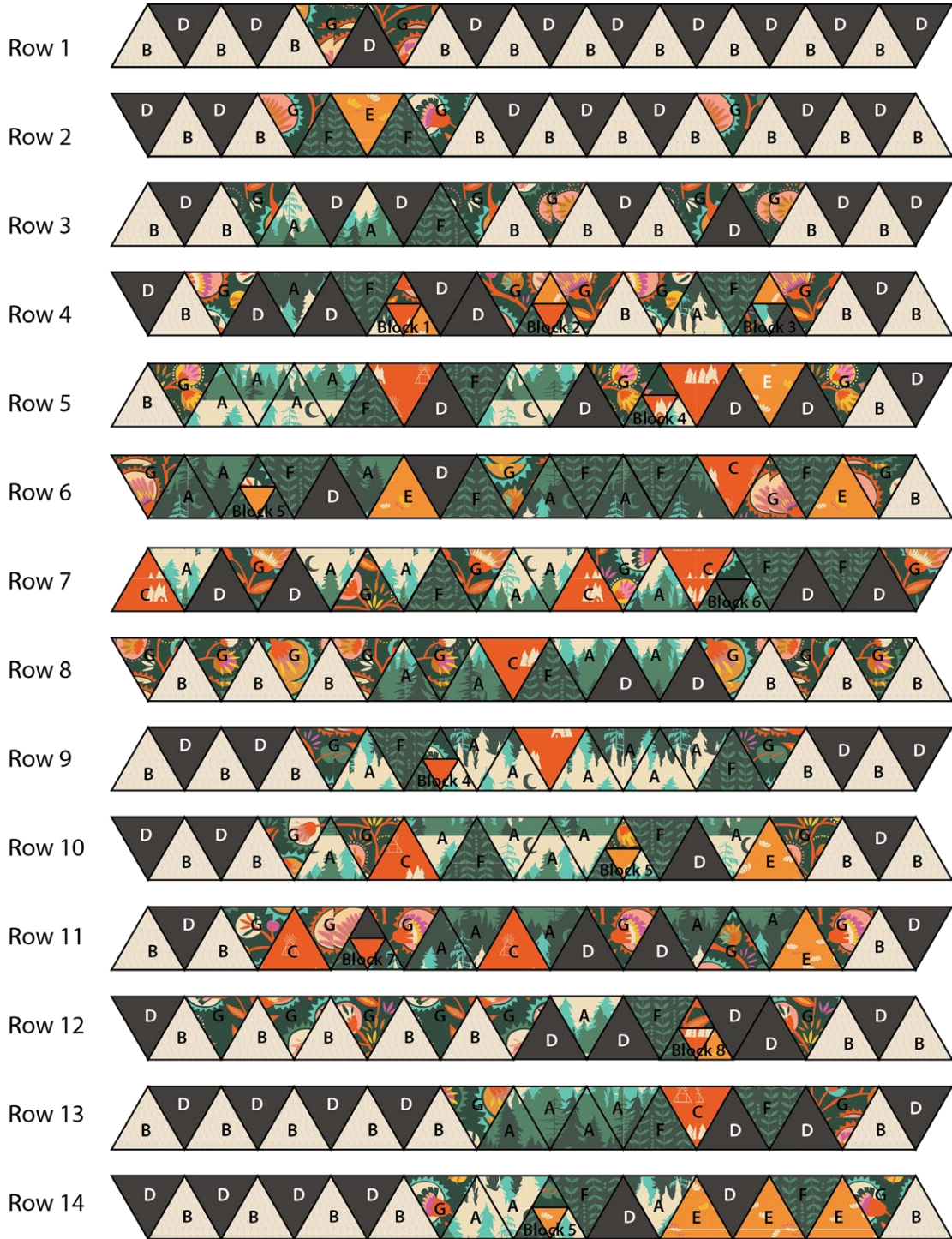


DIAGRAM 3

QUILT TOP

- Give your quilt a good press and square off the edges by measuring $\frac{1}{4}$ " from the tip of the triangles towards the outer part of the quilt to give it seam allowance for your binding. See on diagram below.



DIAGRAM 4

- Your quilt top is ready, now it's time to bind.



DIAGRAM 5

QUILT ASSEMBLY

Sew rights sides together.

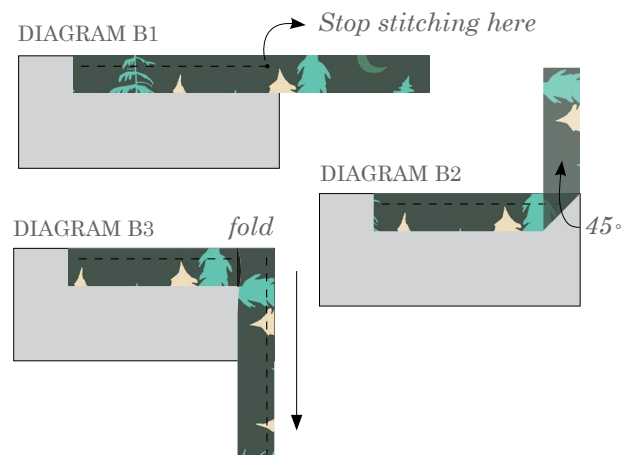
- Place BACKING FABRIC on a large surface wrong side up. Stretch it with masking tape against that surface.
- Place BATTING on top of backing fabric.
- Place TOP on top of the batting with right side facing up. Smooth away wrinkles using your hands.
- Pin all layers together and baste with basting thread, using long stitches. You can also use safety pins to join the layers.
- Machine or hand quilt starting at the center and working towards the corners. Remember that quilting motifs are a matter of personal preference. Have fun choosing yours!
- After you finished, trim excess of any fabric or batting, squaring the quilt to proceed to bind it.

BINDING

Sew rights sides together.

- Cut enough strips $2\frac{1}{2}$ " wide by the width of the fabric **A** to make a final strip 324" long and fold the strip length-wise. Start sewing the binding strip in the middle of one side of the quilt leaving an approximated 5" tail. Sew with $\frac{1}{4}$ " seam allowance (using straight stitch), aligning the strip's raw edge with the quilt top's raw edge.
- Stop stitching $\frac{1}{4}$ " before the edge of the quilt (DIAGRAM B 1). Clip the threads. Remove the quilt from under the machine presser foot. Fold the strip in a motion of 45° and upward, pressing with your fingers (DIAGRAM B2). Hold this fold with your finger, bring the strip down in line with the next edge, making a horizontal fold that aligns with the top edge of the quilt (DIAGRAM B3). Start sewing at $\frac{1}{4}$ " of the border, stitching all the layers. Do the same in the four corners of the quilt.

- Stop stitching before you reach the last 5 or 6 inches. Cut the threads and remove the quilt from under the machine presser foot. Lay the loose ends of the binding flat along the quilt edge, folding the ends back on themselves where they meet. Press them together to form a crease. Using this crease as the stitching line, sew the two open ends of the binding with right sides together (you can help yourself marking with a pencil if the crease is difficult to see).
- Trim seam to $\frac{1}{4}$ " and press open. Complete the sewing. Turn binding to back of the quilt, turn raw edge inside and stitch by hand using blind stitch.
- If you are using our 2.5 edition (binding fabric), click or scan this QR code to see a tutorial on how to use this specialty fabric.



XXXXXXXXXXXXXXXXXXXXXXXXXXXXXXXXXXXX

*Congratulations
& enjoy*

XXXXXXXXXXXXXXXXXXXXXXXXXXXXXXXXXXXX



artgalleryfabrics.com

NOTE: While all possible care has been taken to ensure the accuracy of this pattern, We are not responsible for printing errors or the way in which individual work varies.

Please read instructions carefully before starting the construction of this quilt. If desired, wash and iron your fabrics before starting to cut.

© 2023 Courtesy of Art Gallery Quilts LLC. All Rights Reserved.